

WALK OF FAME

on Austrian Expo-tracks

1 أكتوبر 2021 - 31 مارس 2022
1st October 2021 – 31st March 2022
www.expoaustria.at

Numerous Austrian companies have contributed to the pavilions of other nations or the theme pavilions of the hosting country. With our 'Walk of Fame', we have created a tour following Austria's footsteps at EXPO 2020.

At the end of the presentation you will find a map of the tour.

Start at the Austria Pavilion

querkraft Architekten from Vienna planned the pavilion. The exhibition concept was designed by **Ars Electronica Solutions** from Linz and **büro wien**. The custom graphics were developed by **Bleed** design studio from Vienna. In total, services of **107 companies from Austria** were called upon for the entire implementation of the project.



1 Saudi-Arabia Pavilion

Kraftwerk Living Technologies equipped the pavilion with audiovisual systems.

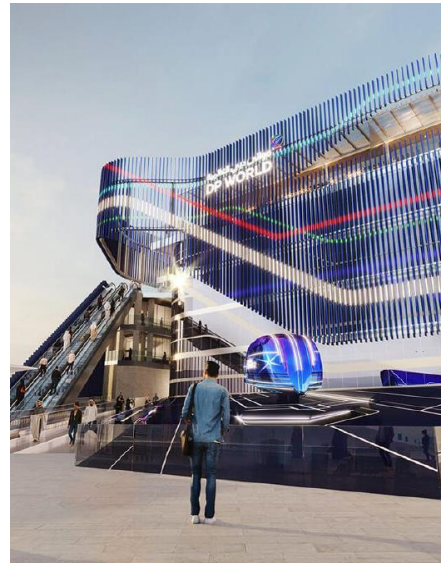
Bartenbach was responsible for Building Light Design. On an area of almost two soccer fields 1,300 glass panels with LED displays, 800 interactive LED pixels, 160 audio channels as well as thousands of projectors were installed.

Numerous speakers are playing Mozarts “Kleine Nachtmusik” (engl. “little nightmusic”) in one part of the pavilion, which can be compared to a gigantic television set.



2 DP-World Pavilion

The **xelectrix** Power energy storage unit XPB-U80-200-M10 - from the company of the same name in Mauthausen - in combination with a photovoltaic system at the DP World Pavilion serves as charging infrastructure for the electric vehicles used by logistics partner UPS.



3 USA Pavilion

The retail area from the USA Pavilion is from the **Umdasch Group**.



4 Japan Pavilion

Delivery and assembly of the steel structure as well as the cladding came from **Unger Steel** with their production site in UAE.
Visual sphere projection by **AV Stumpfl**.



5 Singapore Pavilion

The innovative fogging systems, which are also used at the Austrian pavilion, come from **Raintime**. The combination of increased air speed and water generates an air flow that provides sustainable cooling by up to 10 degrees Celsius.



6 Sustainability Pavilion

The retail areas from all thematic country pavilions are from the **Umdasch Group**.

Planning, delivery and assembly of the steel structure of the 'E-Trees' at one of the three large Expo theme pavilions comes from **Waagner-Biro** with its regional office '**Waagner-Biro Emirates Contracting**' in Dubai.



7 Sweden Pavilion

Stora Enso supplied 3,000m³ of glue laminated timber panels. This product for solid wood construction is used instead of concrete, masonry and steel for the construction of residential, industrial and commercial buildings. **Tilly** supplied joinery and three-layer panels made of natural wood.



8 Al Wasl Plaza

Waagner-Biro from Vienna and its affiliate **Waagner-Biro Emirates Contracting** in Dubai built the mock-up of the steel structure of the Al Wasl Dome (the largest spherical projection screen in the world).



9 Mobility Pavilion

The steel structures for the entrance façade and the upper segments of the second theme pavilion were made by **Unger Stahlbau** in cooperation with their production unit '**Unger Steel Middle East**' in Sharjah.



10 Australia Pavilion

The retail area from the Australian Pavilion is from the **Umdasch Group**.



11 Oman Pavilion

Rubner Holzbau is a leader in the field of sophisticated timber-frame buildings and supplied the timber components.



12 Peru Pavilion

Waagner-Biro GmbH from Vienna provided support for the steel installations in cooperation with its Dubai office **Waagner-Biro Emirates Contracting**.



13 UK Pavilion

Rubner Holzbau applied the wooden structures.

Design, delivery and assembly of the steel showcases by **Wagner-Biro** from Vienna.



14 Belgium Pavillon

Rubner Holzbau GmbH was responsible for planning, producing and transporting the laminations of „The Green Arch“ Belgium Pavillon.



15 Azerbaijan Pavillon

Rubner Holzbau Group used a total of 190 m³ glued-laminated timber and 30 m³ three-layer slabs for the nature-inspired Azerbaijan Pavillon.



16/1 Opportunity Pavilion

The software and hardware for the visual projections of the last stage 'Mission Accomplished' in the Opportunity Pavilion, the third theme pavilion at Expo 2020, were developed by **AV Stumpfl**.



16/2 Opportunity Pavilion

'Wadi', by the company **HELIOZ** is a solar-powered UV measuring device that illustrates the process of solar water disinfection in a PET bottle. It will be exhibited as 'Best Practice' in the Opportunity Pavilion in November 2021.



**Return to the Austrian Pavilion for
refreshments in our coffee house
Austrian Delight!**

Further Austrian Highlights at EXPO 2020

Official Stores at EXPO 2020

The official stores at Expo 2020 are equipped by **Umdasch Group**.



Civil Defence Station EXPO 2020

The zero-emission 'Electric Fire Truck' from **Rosenbauer International** in Pasching will be used as a replacement vehicle during the Expo. It is 20% faster than conventional vehicles with combustion engines and fully recharges within 60 minutes.



Parking management at EXPO Village

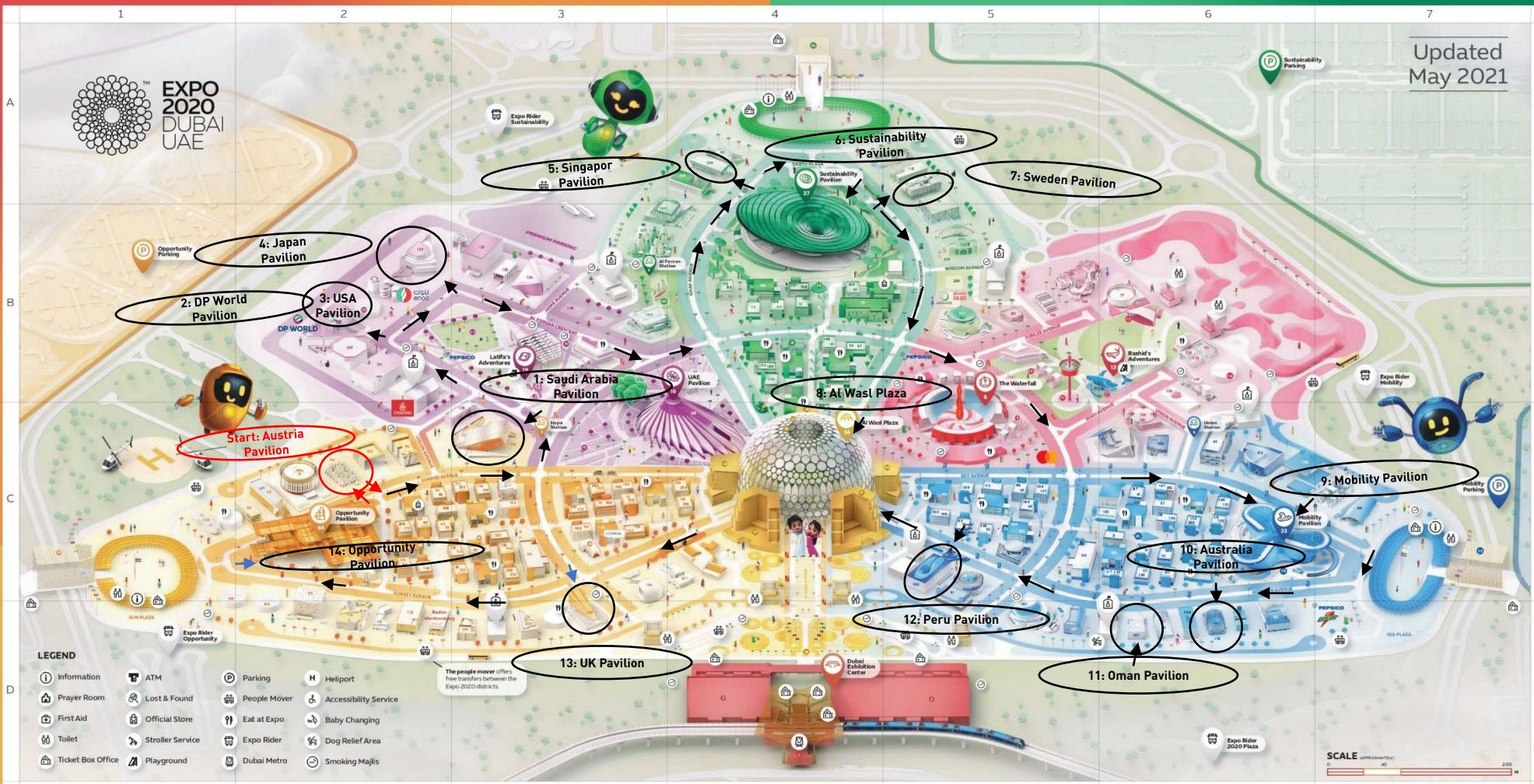
The ticketless parking management system comes from **SKIDATA**.



Rainwater collection system for Dubai South

The 'Deep Tunnel Storm Water System' by **PORR** was implemented at the Expo site for the drainage of the Expo area and the adjacent industrial zone Dubai South. With the help of an oversized cistern and a tunnel, the groundwater and storm water is directed towards a pumping station near the shoreline.





1	2	3	4	5	6	7
POINTS OF INTEREST						
Expo 2020 Station (Dubai Metro)						
1	2	3	4	5	6	7
1	2	3	4	5	6	7
1	2	3	4	5	6	7
1	2	3	4	5	6	7
1	2	3	4	5	6	7
1	2	3	4	5	6	7
1	2	3	4	5	6	7
1	2	3	4	5	6	7
1	2	3	4	5	6	7
1	2	3	4	5	6	7
1	2	3	4	5	6	7
1	2	3	4	5	6	7
1	2	3	4	5	6	7
1	2	3	4	5	6	7
1	2	3	4	5	6	7
1	2	3	4	5	6	7
1	2	3	4	5	6	7
1	2	3	4	5	6	7
1	2	3	4	5	6	7
1	2	3	4	5	6	7
1	2	3	4	5	6	7
1	2	3	4	5	6	7
1	2	3	4	5	6	7
1	2	3	4	5	6	7
1	2	3	4	5	6	7
1	2	3	4	5	6	7
1	2	3	4	5	6	7
1	2	3	4	5	6	7
1	2	3	4	5	6	7
1	2	3	4	5	6	7
1	2	3	4	5	6	7
1	2	3	4	5	6	7
1	2	3	4	5	6	7
1	2	3	4	5	6	7
1	2	3	4	5	6	7
1	2	3	4	5	6	7
1	2	3	4	5	6	7
1	2	3	4	5	6	7
1	2	3	4	5	6	7
1	2	3	4	5	6	7
1	2	3	4	5	6	7
1	2	3	4	5	6	7
1	2	3	4	5	6	7
1	2	3	4	5	6	7
1	2	3	4	5	6	7
1	2	3	4	5	6	7
1	2	3	4	5	6	7
1	2	3	4	5	6	7
1	2	3	4	5	6	7
1	2	3	4	5	6	7
1	2	3	4	5	6	7
1	2	3	4	5	6	7
1	2	3	4	5	6	7
1	2	3	4	5	6	7
1	2	3	4	5	6	7
1	2	3	4	5	6	7
1	2	3	4	5	6	7
1	2	3	4	5	6	7
1	2	3	4	5	6	7
1	2	3	4	5	6	7
1	2	3	4	5	6	7
1	2	3	4	5	6	7
1	2	3	4	5	6	7
1	2	3	4	5	6	7
1	2	3	4	5	6	7
1	2	3	4	5	6	7
1	2	3	4	5	6	7
1	2	3	4	5	6	7
1	2	3	4	5	6	7
1	2	3	4	5	6	7
1	2	3	4	5	6	7
1	2	3	4	5	6	7
1	2	3	4	5	6	7
1	2	3	4	5	6	7
1	2	3	4	5	6	7
1	2	3	4	5	6	7
1	2	3	4	5	6	7
1	2	3	4	5	6	7
1	2	3	4	5	6	7
1	2	3	4	5	6	7
1	2	3	4	5	6	7
1	2	3	4	5	6	7
1	2	3	4	5	6	7
1	2	3	4	5	6	7
1	2	3	4	5	6	7
1	2	3	4	5	6	7
1	2	3	4	5	6	7
1	2	3	4	5	6	7
1	2	3	4	5	6	7
1	2	3	4	5	6	7
1	2	3	4	5	6	7
1	2	3	4	5	6	7
1	2	3	4	5	6	7
1	2	3	4	5	6	7
1	2	3	4	5	6	7
1	2	3	4	5	6	7
1	2	3	4	5	6	7
1	2	3	4	5	6	7
1	2	3	4	5	6	7
1	2	3	4	5	6	7
1	2	3	4	5	6	7
1	2	3	4	5	6	7
1	2	3	4	5	6	7
1	2	3	4	5	6	7
1	2	3	4	5	6	7
1	2	3	4	5	6	7
1	2	3	4	5	6	7
1	2	3	4	5	6	7
1	2	3	4	5	6	7
1	2	3	4	5	6	7
1	2	3	4	5	6	7
1	2	3	4	5	6	7
1	2	3	4	5	6	7
1	2	3	4	5	6	7
1	2	3	4	5	6	7
1	2	3	4	5	6	7
1	2	3	4	5	6	7
1	2	3	4	5	6	7
1	2	3	4	5	6	7
1	2	3	4	5	6	7
1	2	3	4	5	6	7
1	2	3	4	5	6	7
1	2	3	4	5	6	7
1	2	3	4	5	6	7
1	2	3	4	5	6	7
1	2	3	4	5	6	7
1	2	3	4	5	6	7
1	2	3	4	5	6	7
1	2	3	4	5	6	7
1	2	3	4	5	6	7
1	2	3	4	5	6	7
1	2	3	4	5	6	7
1	2	3	4	5	6	7
1	2	3	4	5	6	7
1	2	3	4	5	6	7
1	2	3	4	5	6	7
1	2	3	4	5	6	7
1	2	3	4	5	6	7
1	2	3	4	5	6	7
1	2	3	4	5	6	7
1	2	3	4	5	6	7
1	2	3	4	5	6	7
1	2	3	4	5	6	7
1	2	3	4	5	6	7
1	2	3	4	5	6	7
1	2	3	4	5	6	7
1	2	3	4	5	6	7
1	2	3	4	5	6	7
1	2	3	4	5	6	7
1	2	3	4	5	6	7
1	2	3	4	5	6	7
1	2	3	4	5	6	7
1	2	3	4	5	6	7
1	2	3	4	5	6	7
1	2	3	4	5	6	7
1	2	3	4	5	6	7
1	2	3	4	5	6	7
1	2	3	4	5	6	