



SUR

Timber Construction Trade Mission

PRIS

Company Profiles

INGLY

29 February – 1 March 2024

INGE

www.advantageaustria.org/cn

NIOUS

WO RLD CLASS PART NERS

Participants

公司名单

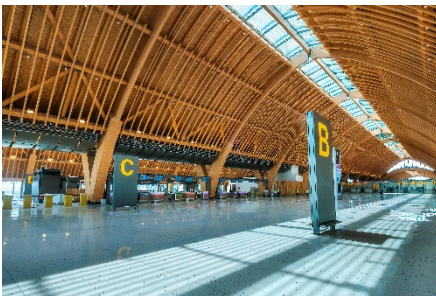
1. RUBNER HOLZBAU GMBH
2. HASSLACHER HOLDING GMBH
3. PFEIFER TIMBER GMBH
4. RAIMUND BECK KG
5. MAYR-MELNHOF HOLZ HOLDING AG
6. NEUE BAUPHYSIK UND ENERGIEDESIGN GMBH

Rubner Holzbau GmbH
Rennersdorf 62
3200 Ober-Grafendorf, Austria
T +43 2747 22510
E holzbau.obergrafendorf@rubner.com
W www.rubner.com

Rubner Timber Engineering
Hong Kong
E phyllis.chong@rubner.com

The „Rubner Holzbau GmbH“ in Ober-Grafendorf, Austria, has been part of the engineering wood construction business unit of the family-owned Rubner Group headquartered in Kien/ South-Tyrol since 2006. With a total of around 550 employees in Ober-Grafendorf and 5 other locations in Italy, Germany and France, Rubner Engineering Wood Construction produces around 250,000 m² of roof and façade element, around 85,000 m² of special components made of glued laminated timber and 10,000 m² of cross-laminated timber each year. The largest foreign sales markets include Great Britain, Australia/ New Zealand and the Asian Region.

自 2006 年以来，位于奥地利上格拉芬多夫的 Rubner Holzbau GmbH 公司一直隶属于总部位于南蒂罗尔州基恩的家族企业 Rubner 集团的工程木结构业务部门。Rubner 工程木结构公司在上格拉芬多夫以及意大利、德国和法国的五地共有约 550 名员工，每年生产约 25 万平方米的屋顶和幕墙构件、约 8.5 万平方米的胶合层压材特殊部件以及 1 万平方米的交叉层压材。最大的国外销售市场包括英国、澳大利亚/新西兰和亚洲地区。



HASSLACHER Holding GmbH
Feistritz 1
9751 Sachsenburg, Austria
T +43 47 69 22 49-0
F +43 47 69 22 49-129
E info@hasslacher.com
W www.hasslacher.com

The HASSLACHER group is a globally active innovation leader in the field of intelligent and integrated system solutions for modern timber construction. The family-run enterprise has had its roots for generations in the use of wood as a wonderfully renewable raw material and for more than 120 years has stood for a pioneering spirit, performance, quality, sustainability, and social responsibility.

Together with its 2000 employees, the HASSLACHER group produces innovative products in the areas of sawn timber, profiled timber, glued laminated timber, cross laminated timber and structural finger jointed solid timber for the European and international market. True to our motto "From **wood** to **wonders**."



© Mark Hazeldine

HASSLACHER 集团是全球现代木结构建筑智能集成系统解决方案领域的创新领导者。这个家族企业始终将木材作为可再生的绝佳原材料，120 多年来一直秉承着开拓精神、卓越性能、质量优先，坚持可持续性原则并承担社会责任。

HASSLACHER 集团拥有 2000 名员工，为欧洲和国际市场生产锯材、异型材、胶合层压材、交叉层压材和指接实木结构材等领域的创新产品。我们的座右铭是“从木材到奇迹”。



© HASSLACHER Gruppe | HESS TIMBER | Laurent Blossier



Pfeifer Holding GmbH

Fabrikstraße 54

6460 Imst, Austria

T +43 5412 6960 0

F +43 5412 6960 200

E info@pfeifergroup.com

W www.pfeifergroup.com

Pfeifer Timber GmbH

Muehlenstr. 7

86556 Unterbernbachm, Germany

E hongjun.wu@pfeifergroup.com

The Pfeifer Group specialises in the production of wood products for clearly defined purposes: timber construction, concrete formwork technology, the packaging industry, sawn timber and planed goods. Supposedly waste materials, such as sawdust, are refined into sources of sustainable bioenergy.

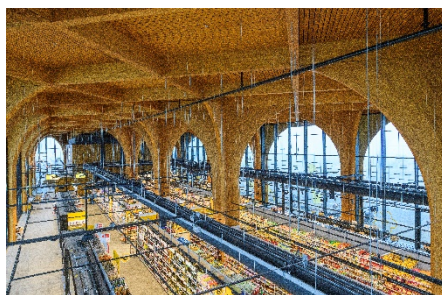
In order to expand further, especially in the timber construction segment, the group is seeking contacts with timber construction companies, construction companies, timber merchants, architects, planners and engineers.

Pfeifer 专注于为明确定义的领域生产木材产品：建筑木材、混凝土模板技术、包装工业以及锯材和刨花。所谓的下脚料，例如锯屑，Pfeifer 作为燃料专家将其制作成可持续发展的生物能源的载体。

我们不断征寻建筑木材企业、建筑企业、经销商、建筑师、规划师和工程师，与他们建立良好的合作关系，实现更大的市场拓展。



© Pfeifer Group



© Pfeifer Group



Raimund Beck KG Wire Staples Company
Raimund-Beck-Straße 1
5270 Mauerkirchen, Austria
T +43 7724 2111 0
F +43 7724 2111 20
E office@beck-austria.com
W www.beck-fastening.com

China Technical Representatives
E zhangjingda2004@163.com

The BECK group is one of the world's leading premium manufacturers of fastening systems and innovative fastening solutions. Founded in 1904, the family-owned company, now in its fourth generation, is globally active with customers in more than 50 countries.

LIGNOLOC® is the first collated nail system made of wood that perfectly combines performance and sustainability. Ideal for all timber construction companies who want to implement their projects metal-free but also highly efficient. LIGNOLOC® is processed by a pneumatic nailer and is perfect for use in industrial manufacturing and ecological timber construction.



BECK 集团是全球领先的紧固件系统和创新紧固件解决方案制造商之一。这家家族企业成立于 1904 年，现已发展到第四代，业务遍及全球，客户遍及 50 多个国家/地区。

LIGNOLOC® 是首个将性能和可持续性完美结合的首款木质卷钉系统。非常适合所有希望实施无金属且高效项目的木材建筑公司。LIGNOLOC® 木钉需要使用气动钉枪发射，非常适合用于工业制造和生态木结构建筑。





Mayr-Melnhof Holz Holding AG
Turmgasse 67
8700 Leoben, Austria
T +43 3842 300
E leoben@mm-holz.com
W www.mm-holz.com

Office in China:
Room 1702, 17F, No. 167 Jiangning Road, Xin
Cheng Mansion, (crossing West Beijing Road),
Jingan District
200041 Shanghai
E wendy.zhu@bergkvistsiljan.com
gillian.liang@bergkvistsiljan.com

Mayr-Melnhof Holz has more than 170 years of experience with wood as a raw material. Their reliability and product quality are founded on secure sources of supply, on continuous traceability of the origin of the raw material, on a transparent system of quality assurance governing their products, and on the continuous optimization of technical processes.

Mayr-Melnhofs's five high-performance sawmills in Leoben (AT), Paskov (CZ), Insjön (SE), Blyberg (SE), and Mora (SE) are located in the center of densely-forested regions with good log availability and can thus ensure the supply of the sawmills and wood processing plants. Well-stocked warehouses at all locations ensure constant supply by availability and short delivery times. The high turnover of goods ensures products of lasting value from Mayr-Melnhof Holz.

Mayr Melnhof 家族与木材结缘已有 170 多年了。我们的可靠性和产品质量建立在安全的供应来源、原材料原产地的持续可追溯性、管理我们产品的透明质量保证体系以及技术流程的持续优化之上。

我们在 Leoben（奥地利）、Paskov（捷克）、Insjön（瑞典）、Blyberg（瑞典）和 Mora（瑞典）的五家高性能锯木厂位于森林茂密地区的中心，原木供应充足。所有地点都有库存充足的仓库，可确保持续供应和缩短交货时间。



NEUBAU

BEST ENERGY

Neue Bauphysik und Energiedesign GmbH
Leopoldauer Straße 163 / 226
1210 Wien, Austria
T +43 699 1502 1982
E office@neubau.energy
W www.neubau.energy

China Representatives:
E 273062736@qq.com

“Neue Bauphysik und Energiedesign GmbH” is headquartered in Vienna, Austria. It is active in the EU, China, Russia, Kazakhstan, and other regions. It is mainly engaged in the field of high energy efficiency and energy-saving buildings: providing solutions, design, calculation and construction of low-energy/ultra-low energy buildings, passive houses, zero-energy buildings and productive buildings. The company can also optimize building energy systems, interior comfort and regional energy systems.

奥地利诺恩堡建筑物理及新能源有限公司是总部位于维也纳，活跃于欧盟，中国，哈萨克斯坦、俄罗斯等地区，主要致力于高效节能建筑领域内：提供低能耗/超低能耗建筑，被动房，零能耗建筑及产能建筑等的方案，设计，计算，施工。公司还能对建筑能源系统、内部环境舒适度以及区域的能源系统进行优化。



NOTES

NOTES

SURPRIS INGLY INGENIOUS

www.advantageaustria.org/cn




For information please contact:

ADVANTAGE AUSTRIA Beijing

Austrian Embassy – Commercial Section
Suite 2280 Beijing Sunfolwer Tower
No. 37 Maizidian Street, Chaoyang District
100125 Beijing
China

T +86 10 8527 5050
F +86 10 8527 5049
E peking@advantageaustria.org
W www.advantageaustria.org/cn



 Bundesministerium
Arbeit und Wirtschaft



 WKO