

# ParaStruct

We enable Circular Solutions



The Problem: ♦ **Mountains of Unused Materials**

♦ **Resource Scarcity / Dependencies**

♦ **Rising Costs**

in construction & manufacturing industries.



Building and Construction are responsible for:

**38 %** of Global CO<sub>2</sub> Emissions

**2/3** of Global Waste Generation



# The Solution:

We turn Trash into Cash. How?



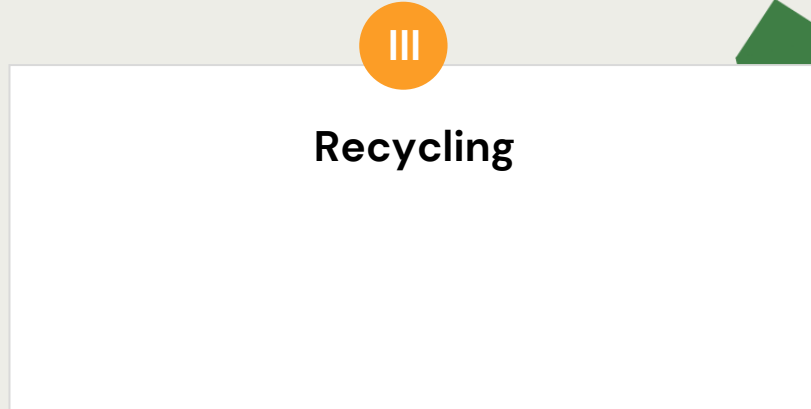
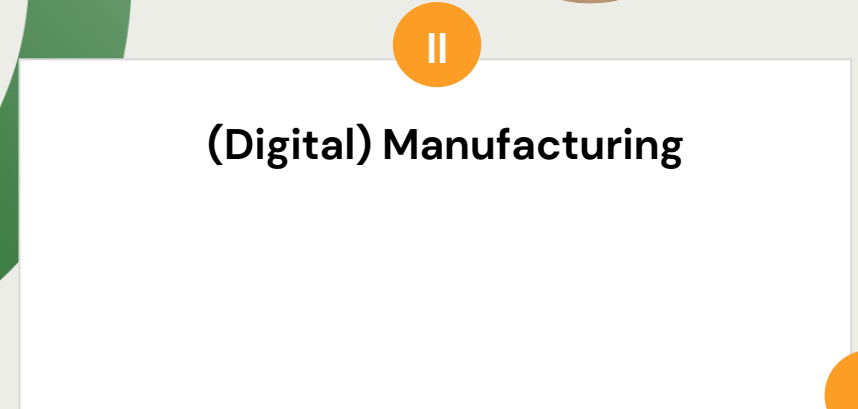
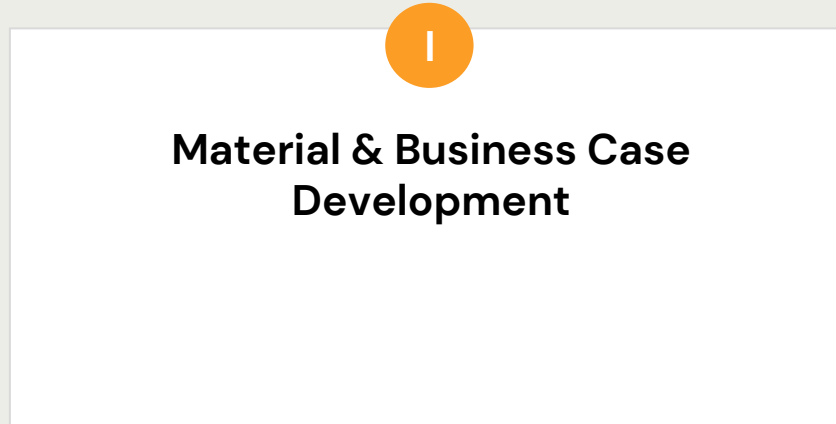
# The Solution:

We turn Trash into Cash. How?

**Our Core Skills:**



**Mineral and  
Biogenic Waste**  
even < 2mm



# The Solution:

We turn Trash into Cash. How?

**Our Proprietary Technology:**



Mineral and  
Biogenic Waste  
even < 2mm

I

Material & Business Case Development  
**Proprietary Material Platform**



II

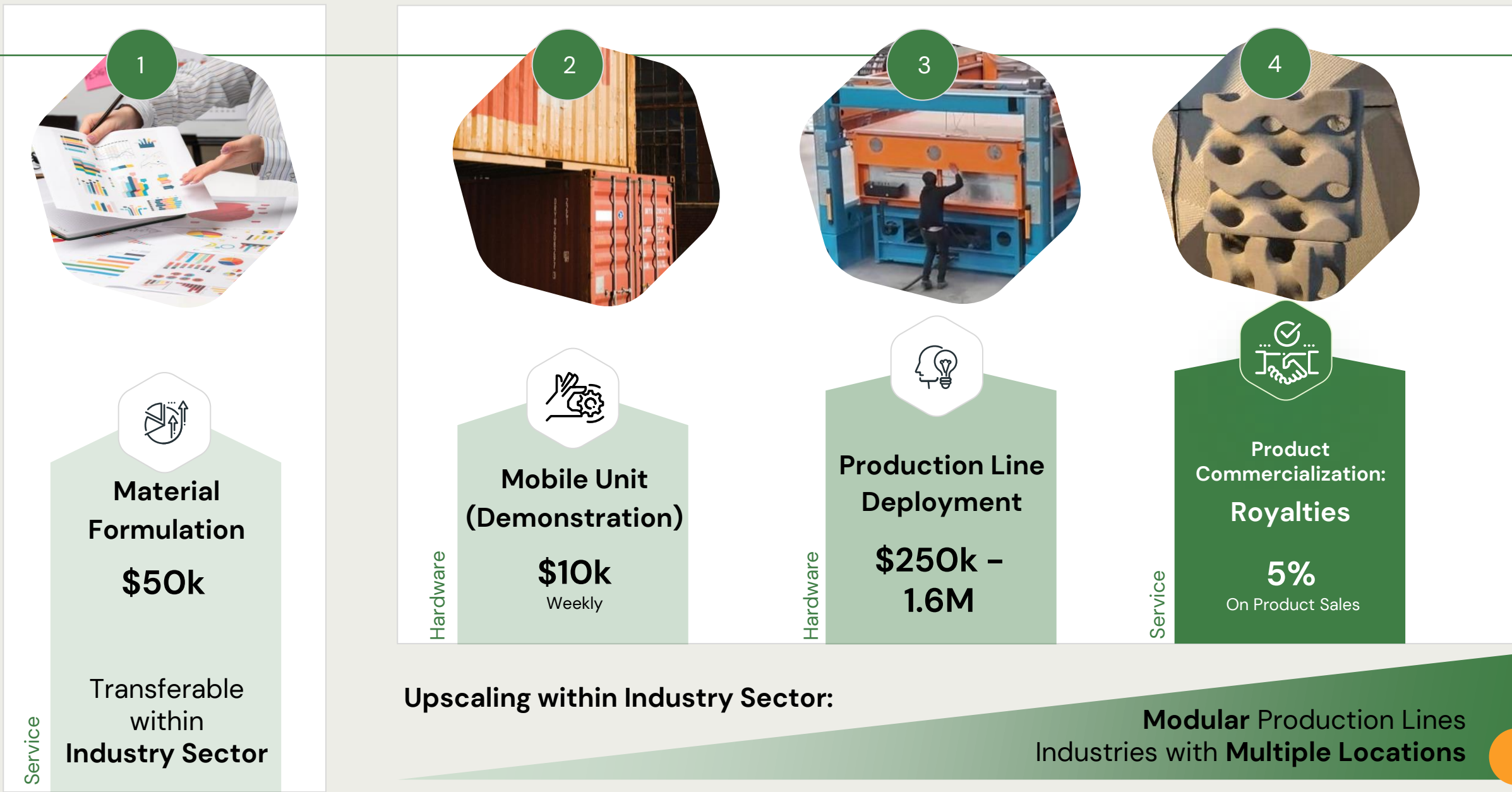
(Digital) Manufacturing  
**Patented Circular Applications**

III

Recycling  
**ParaStruct Recycling Process**



# Business Model 1: Step-by-Step Full-System Solution





# Case Study: Customer from Refractory Industry (LoS)

## Customer pain

40.000 tons of waste per year

## USP

“We Cash The Trash”



## Value

- \$800k yearly costs avoided
- Earn potential of \$1.5M per year.

–Cashback in 2 Years–



# The Founders



## **Georg Breitenberger:** **Chief Executive Officer**

Innovation manager, civil engineer, 25 YEX in construction.

**Development of 3D printing technologies in construction, materials and IP-rights.**



## **Dr. Freia Ruegenberg:** **Chief Scientific Officer**

Postdoc, Chemist, highly awarded young scientist, Chief Scientific Officer. 4 YEX in fundamental research.

**Verification binder recycling for 15k.**



## **Kilian Rießbeck MSc:** **Circular Development Engineer**

Materials scientist and Circular Development Engineer. Expert circular processes.

**Verification binder recycling for 15k.**



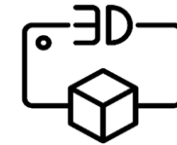
# Our Impacts: Full Circularity in Construction

ParaStruct

~ **90% less raw material extraction**  
landfilling & decreasing biodiversity loss.



**40–70% material savings**



> **50% Reduction of CO<sub>2</sub> emissions**,  
400–500kg CO<sub>2</sub>/t cement replaced.



**Sustainable, functional,  
& cost-effective  
building products.**





*[info@parastruct.org](mailto:info@parastruct.org)*



**ParaStruct**  
We enable Circular Solutions