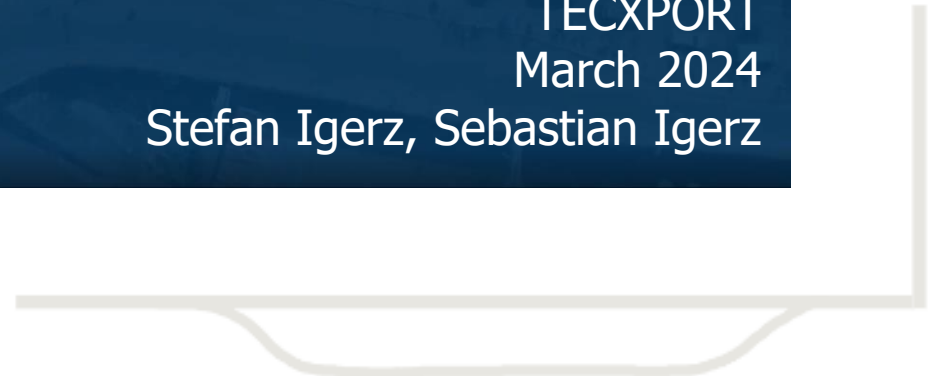




SKYEXPRESS

TECXPOR
March 2024

Stefan Igerz, Sebastian Igerz



The world's first and only **monorail system**, revolutionizing transportation with unparalleled **flexibility** and **capacity**. Designed for both passenger and cargo transportation, SKYEXPRESS offers a multi-stage transport system that combines **regular public transport with individual and goods logistic options**.

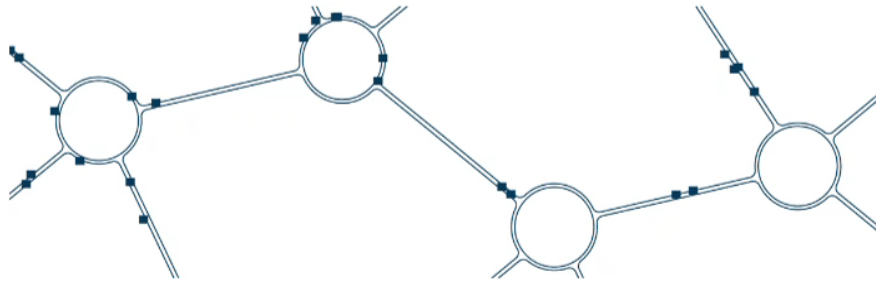


SKYEXPRESS

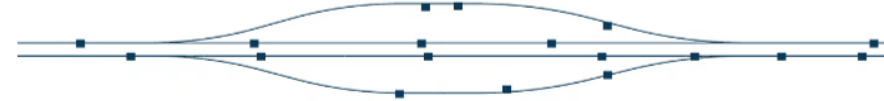
TECXPOR
March 2024
Stefan Igerz, Sebastian Igerz

The concept

roundabouts



stops



Stops are always routed off the main line in a parallel rail, so that continuous traffic is never affected.

Cabins

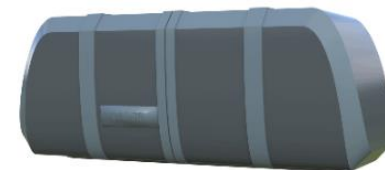
individual cabins



line cabins

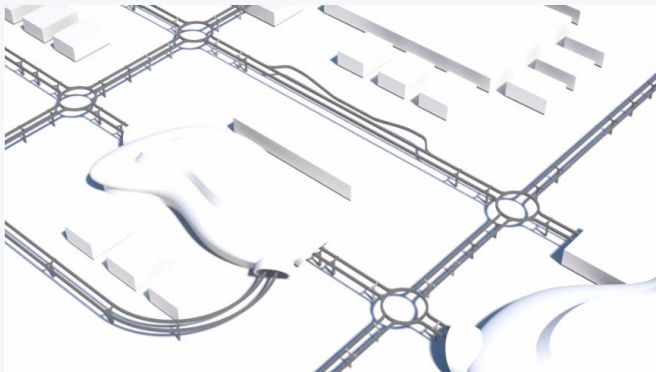


cargo units

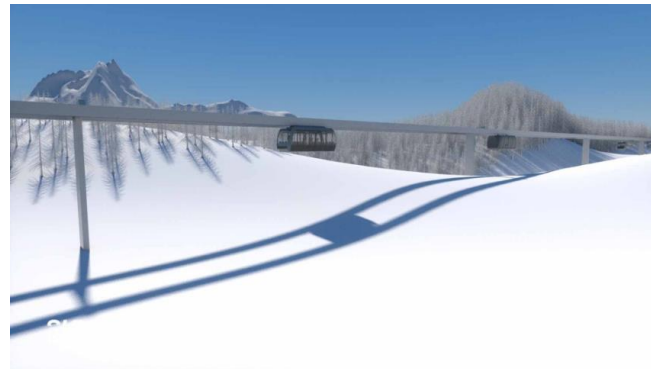


Key features

expandable



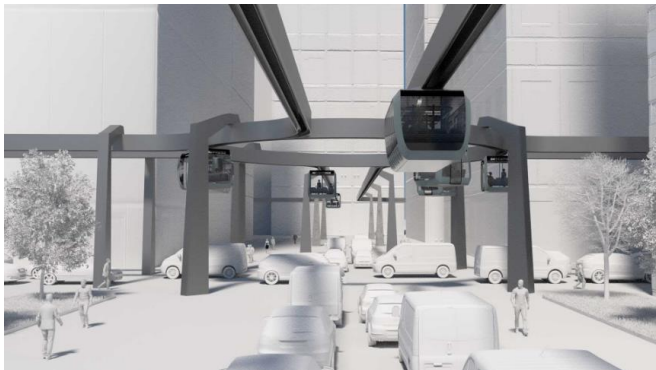
hilly terrain



stops on different levels



inercity traffic



goods logistic



smart system



What is so special about it?

- Can be used independently of traffic
- Autonomous and Safe
- Overall faster and more affordable than a private car
- With your own app, it is easy to use from purchase to navigation to information in real time
- With spare cabins at the bus stops, waiting times are very short



economic



flexible and safe



individual



sustainable

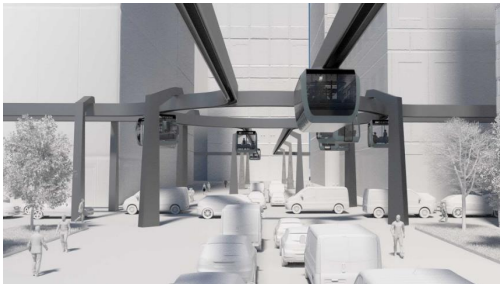
Technology of The Rail System



- Solar panels for energy supply of the whole system
- Creation of shadow for the pedestrian, for less heat impact
- Solar energy can be sold to energy providers for greener electricity
- Per 1 kilometer of track a surplus of up to 389 MWh can be produced to power local area

Analysis of Competitors

Following a short comparison of important key values for infrastructure



	SKYEXPRESS	Street	Subway	Regional Train
Cost per km	4-5 M€*	15-20M€	150-200M€	30-50M€
Max speed [km/h]	120	100	80-100	100-140
Avg. travel time for 3.7km /within city [min]	9	27	16	16

Travel distance of 3.7km, assumed from Munich-Central-Station surface level to Munich-East-Station surface level
*including Stations

Our offer

- SKYEXPRESS drives **autonomously, digitized, efficiently and sustainable**
- **Demand-oriented** public transport with very high capacity, as well as individual use by means of small to large cabins
- More **cost effective** than traditional transportation such as bus, taxi, train, Uber rides
- **Quiet** in operation and usable with very little floor space
- **Reduction of delivery traffic** in the city through goods logistics using special cabins
- Gaining open space thanks to the use of **the third level** ...
- ...

The team behind SKYEXPRESS

Sebastian Igerz

For years, Sebastian was active in the field and was able to gain experience in a wide variety of areas such as insurance, distribution/sales and also in key account management. He spent the last few years as an application engineer installing in-house products with software solutions in the field of dry construction, focus on scheduling/logistics. At SKYEXPRESS, Sebastian takes care of winning the interest of customers, as well as developing the concept and co-developing the future software solution on the app.

Dipl.-Ing. (TUM) Stefan Igerz

After completing his training at the higher technical college with a focus on logistics, he decided to study mechanical engineering at the Technical University of Munich, specializing in vehicle and engine technology. After 5 years in the automotive industry as a sales engineer and key account manager, he recognized the need for more sustainable mobility, which is why he is committed to the SKYEXPRESS concept.

The team behind SKYEXPRESS

Ing. Winfried Ruck

Developer and designer of the SKYEXPRESS Monorail transport system. Studied process engineering in Graz, 18 years active in research and development of new processing technologies in the field of polyurethanes. 20 years of self-employment as an overall project manager, engaged by Swiss, American and German corporations for projects in Europe, north-/middle America, Africa and Asia. After entering (official) retirement, various ideas were pursued and SKYEXPRESS was born.

Contact Us

**Ready to revolutionize transportation?
Contact us now to explore partnership opportunities and be part of the future of mobility.**

SKYEXPRESS Team



+43 660 25 21 204



office@igerz-business.com



<https://SE-Rail.com/>

We are looking forward to
hearing from you

Let's transform the way we move together.