

# SkiData Smart Parking Solutions: The Key to Modern Urban Mobility

let's  
welcome

**Austrian Technology Days**



# SKIDATA – The Global Leader in Access & Revenue Management



HQ located at Salzburg, Austria. For more than 45 years, we change the world of welcoming people – for you and with you. We are more than just a supplier. We are your partner and advisor.



# SKIDATA | Access to Mountains, Events and Parking



80% of ski days per year are managed by SKIDATA solutions.  
30,000 ski tickets sold per hour via SKIDATA systems.



Products are used in more than 200 stadiums including 50% of all Euro and World Cup stadiums.



Over 10,000 installations in 100 countries. Biggest airports and car parks in the world are using SKIDATA systems.



# SKIDATA Company Milestones

## - Expertise for Over 45 years and 100 Countries



Founding year: SKIDATA develops the first cash register and printed ski tickets

1987

keycard®: first hands-free ski tickets based on RFID technology



1989

SKIDATA expands its portfolio to include fairs, attractions and stadiums



2001

sweb® Platform: cloud-based system architecture is introduced



2019



1977

Installation of first parking systems.



1987

World-first entry and payment with CC at the parking column



1991

Kudelski Group acquires SKIDATA



2017

The 26<sup>th</sup> subsidiary is formed in Portugal



# SKIDATA Parking Systems Limited (HK)



Established  
**1998**

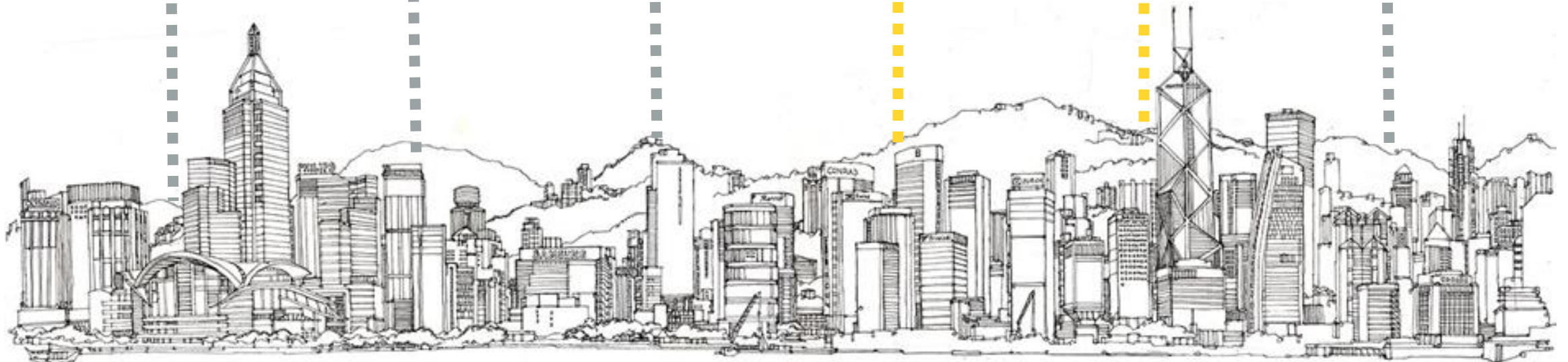
ISO 9001  
ISO 14001  
ISO 45001  
ISO 27001

**70+**  


Our Major Business Areas



**300+**  
Installations

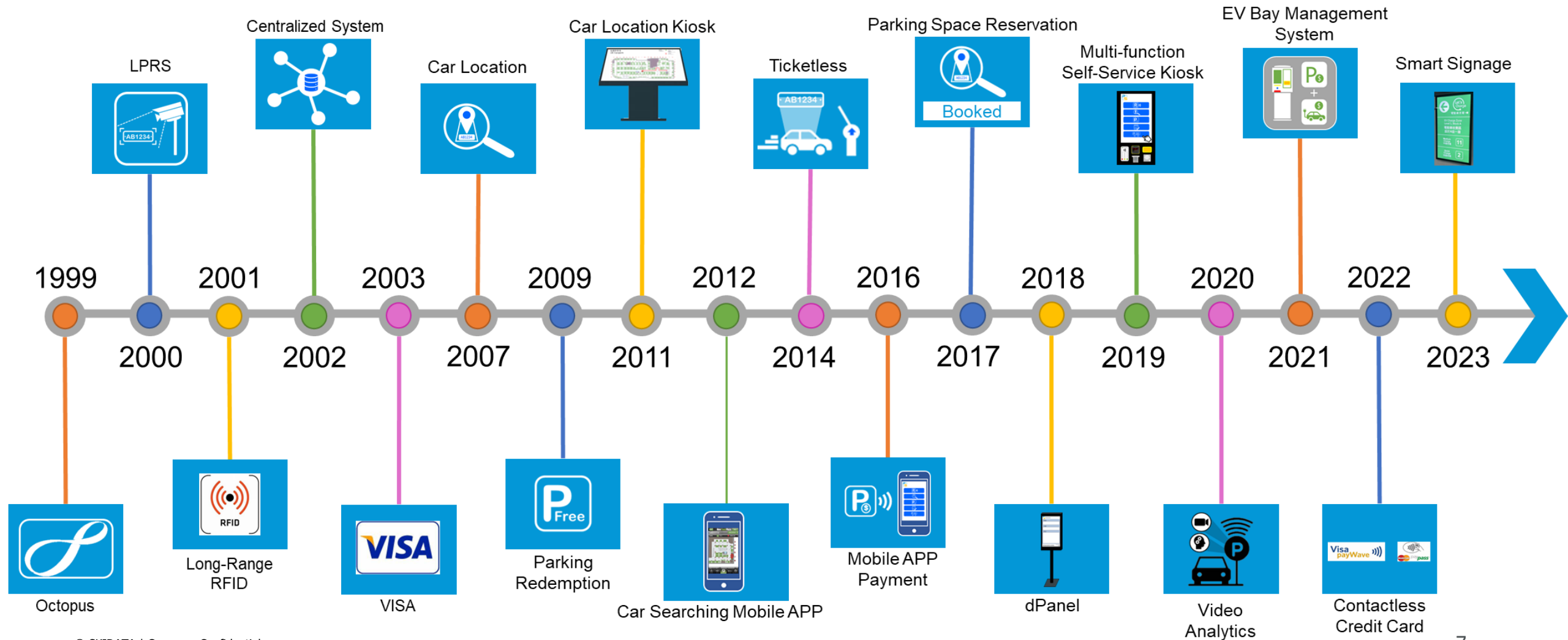


# Our Major Clients





# Our Development History



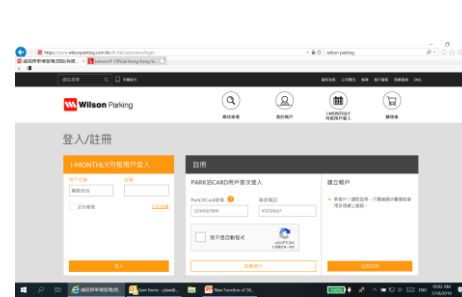
# Leading in Online Services and E-Payment Solutions



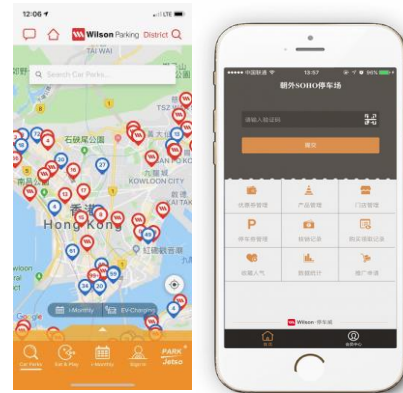
SHKP MALLS APP



WP iMonthly



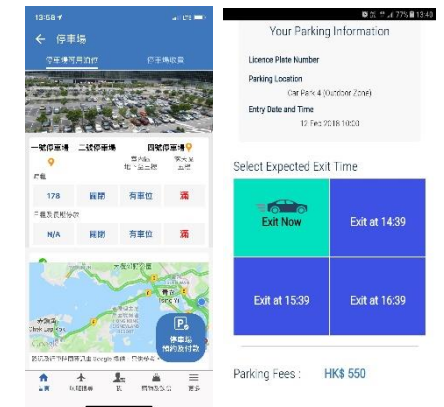
WP APP



Car Search and Available Bays



HKIA Pre-book and Online Payment



SkiData E-Payment Solutions

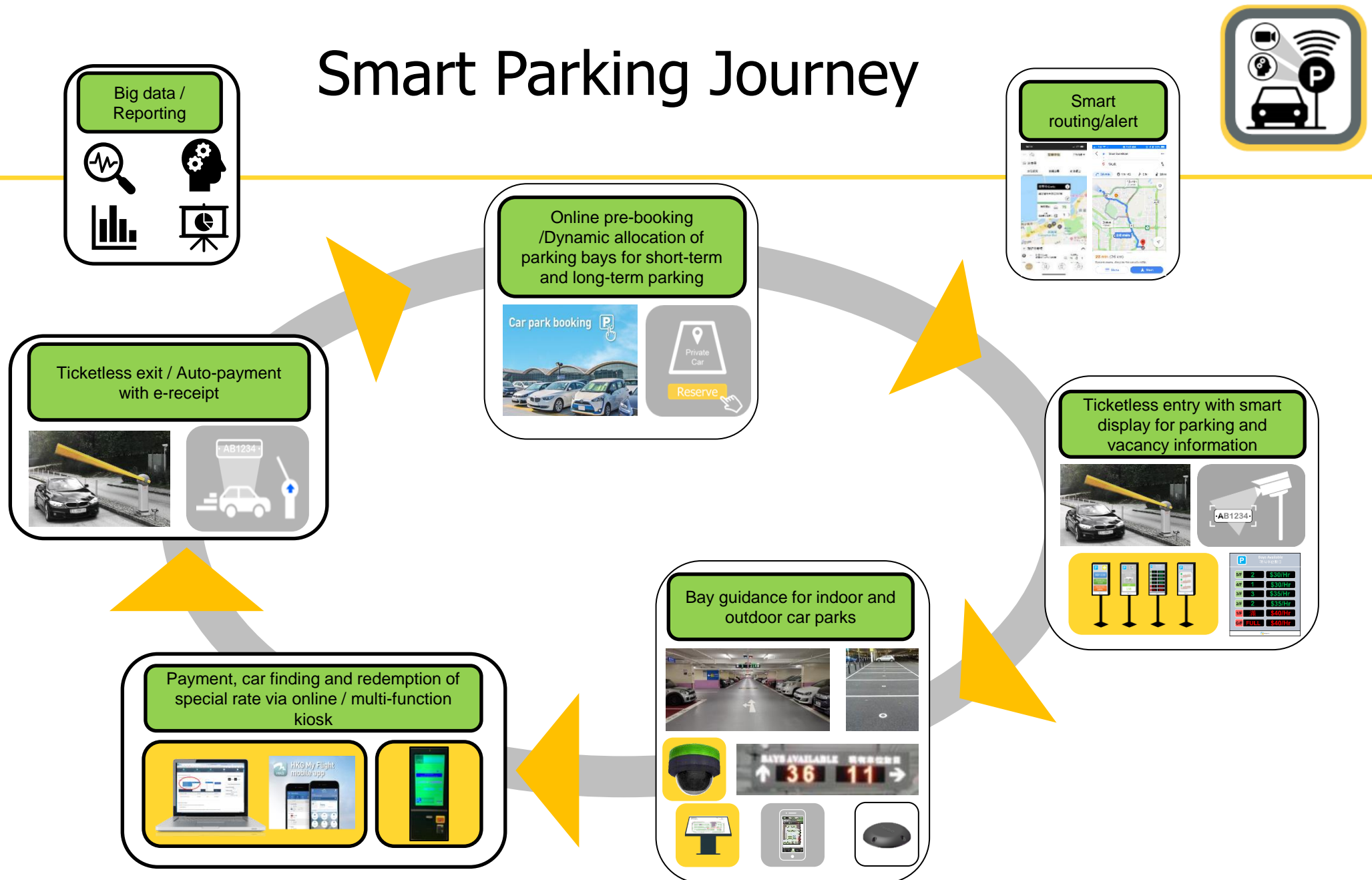






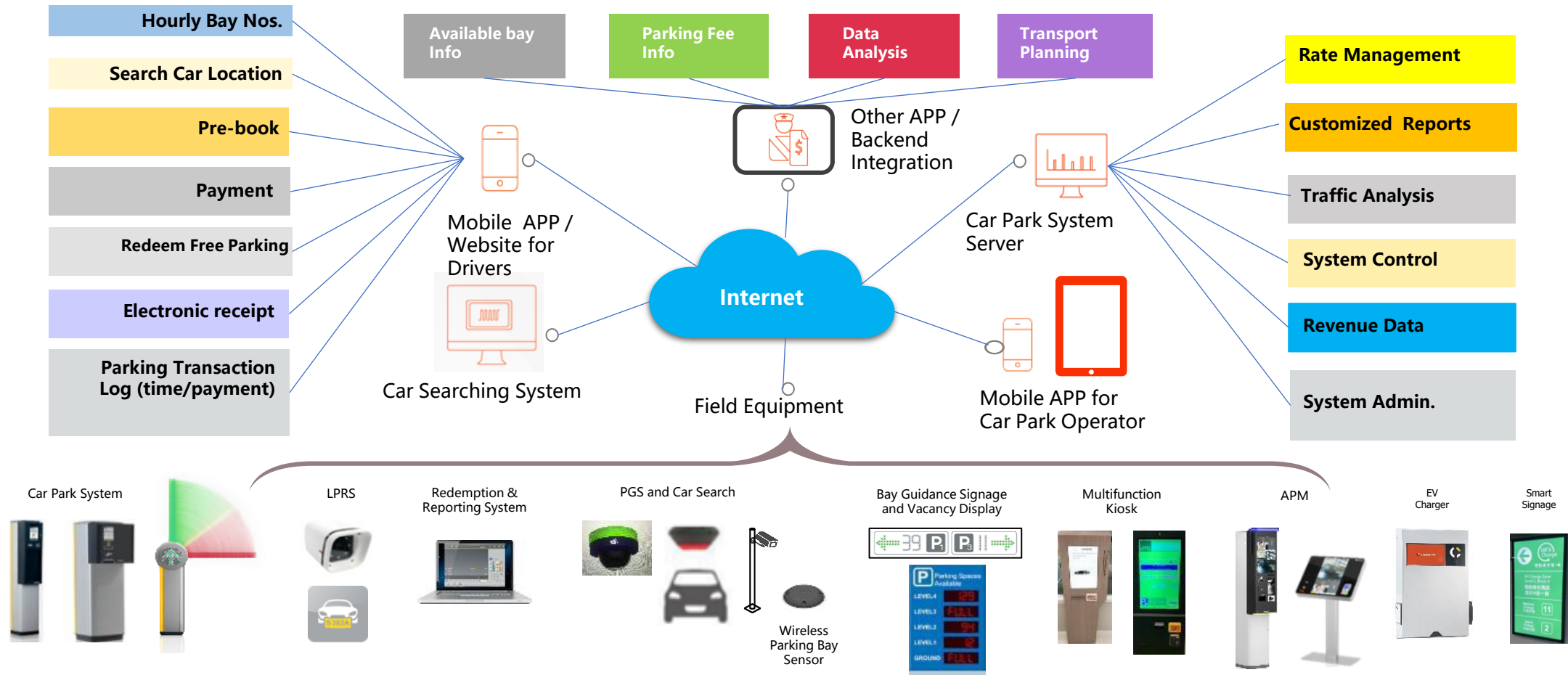
# **SkiData Smart Parking Solutions**

# Smart Parking Journey

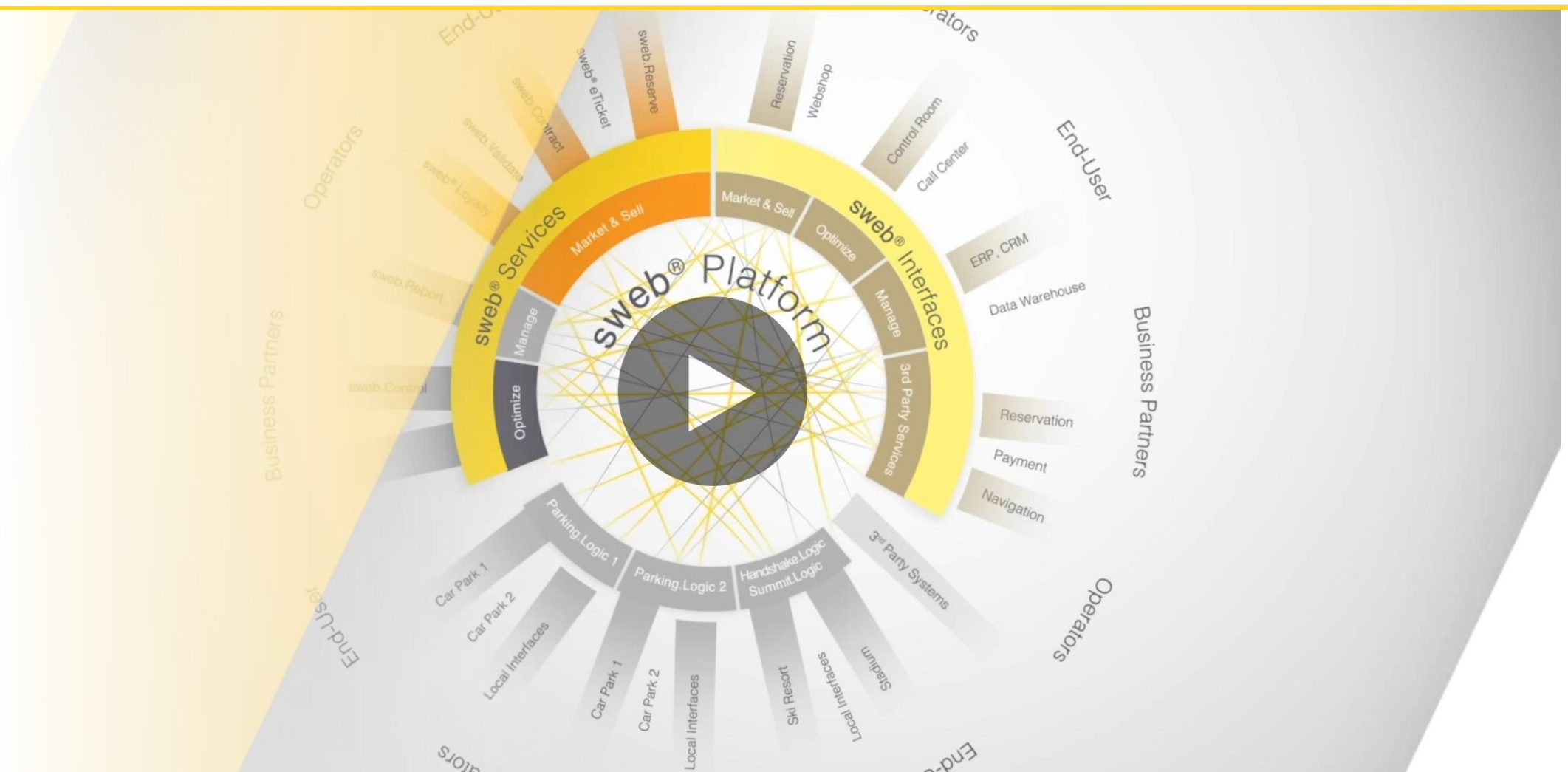




# Architecture of our Smart Parking System

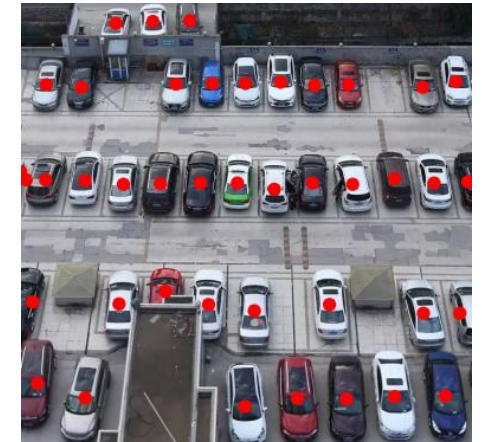
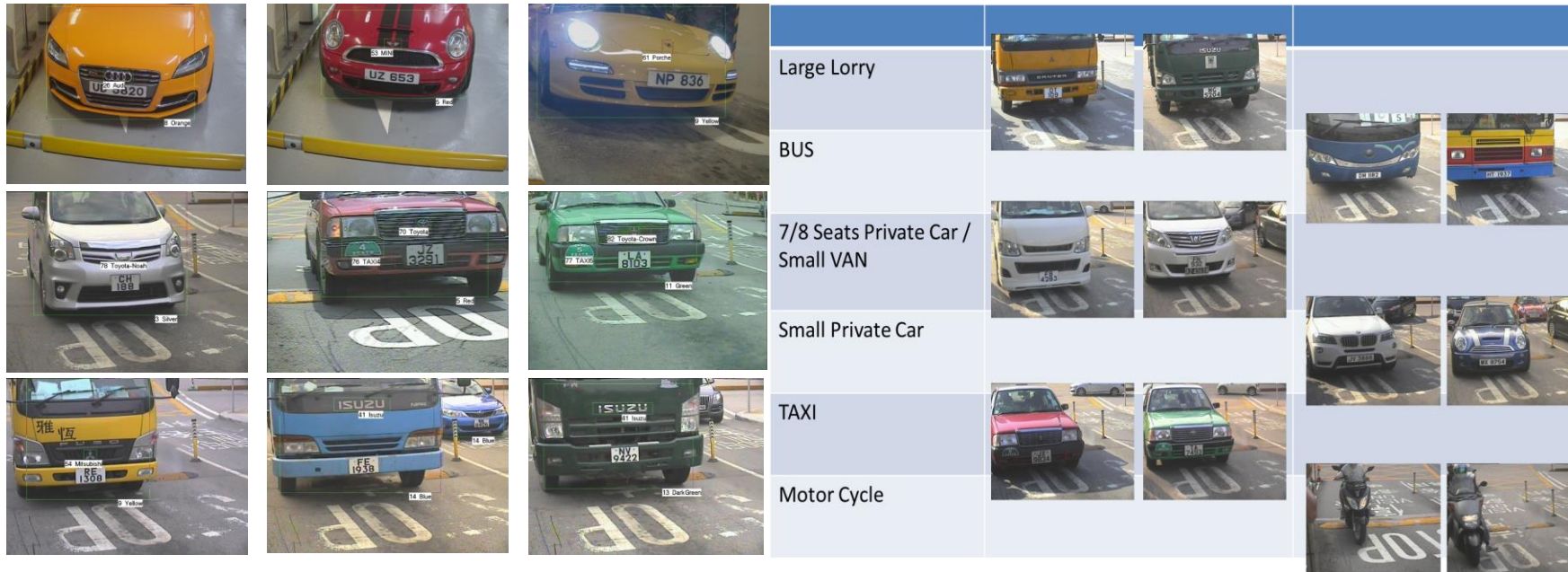


# Online Cloud Services SKIDATA sweb® Platform





# Video Analytics for Vehicle Features and Bay Occupancy Detection

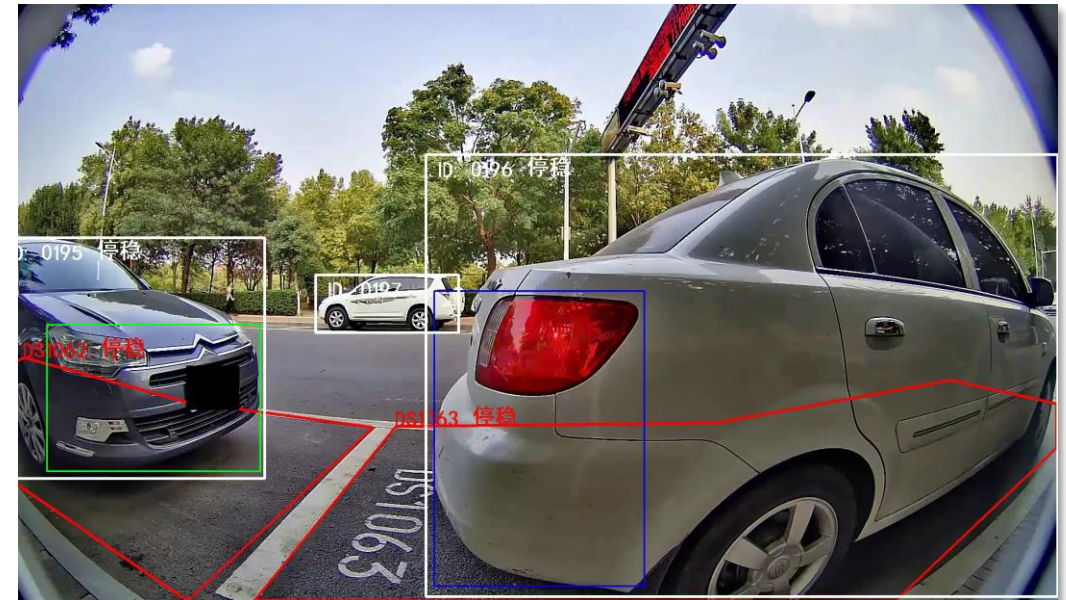
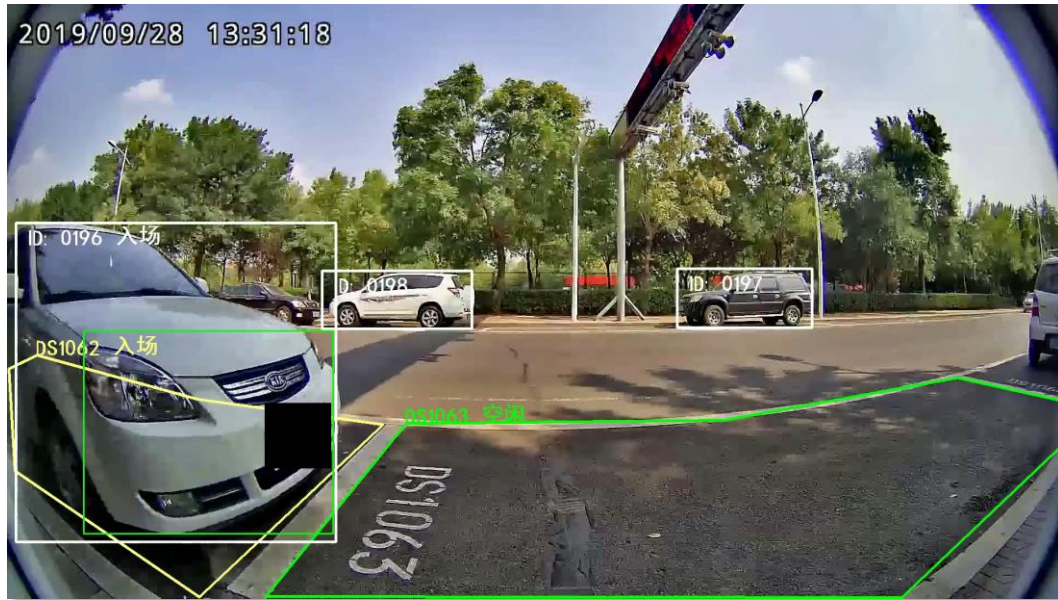


License Plate, Vehicle Brand & Colour Recognition

Vehicle Classification Detection

Parking Bay Occupancy Detection

# Video Analytics for Parking Bay Monitoring





# Video Analytics for EV Bay Management System



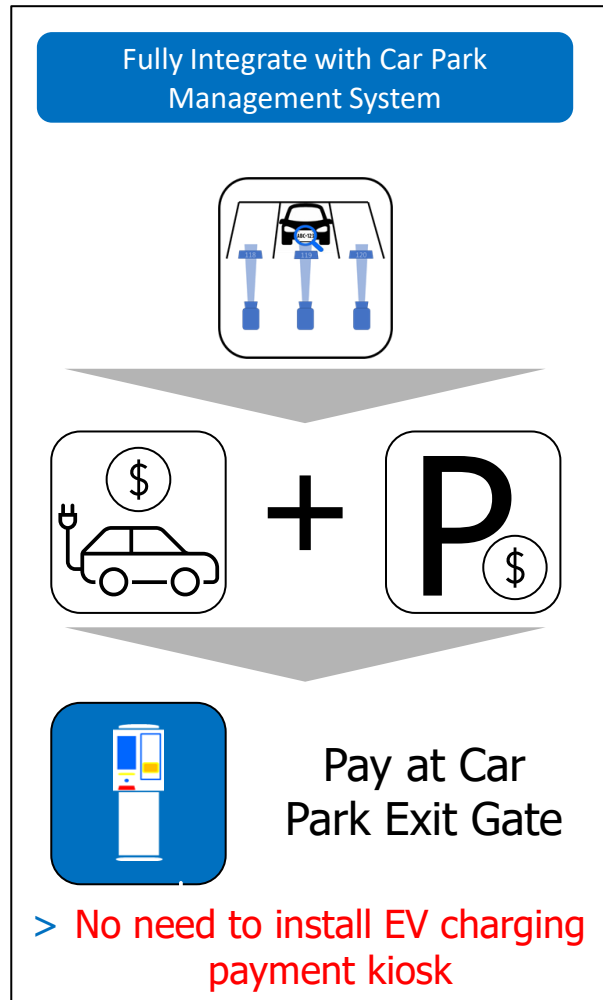
## 1. Recognise Vehicles Features:

- Car Plate Number
- Car Brand
- Car Colour
- Car Type

## 2. Purposes:

- Big data for future analysis
- Special promotion for specific car brand
- Enforcement of EV bay

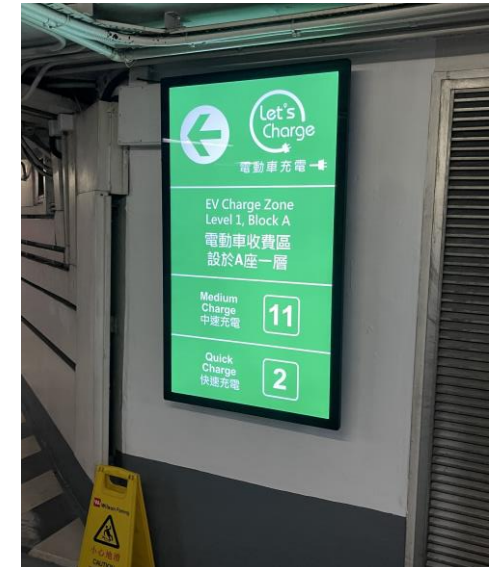
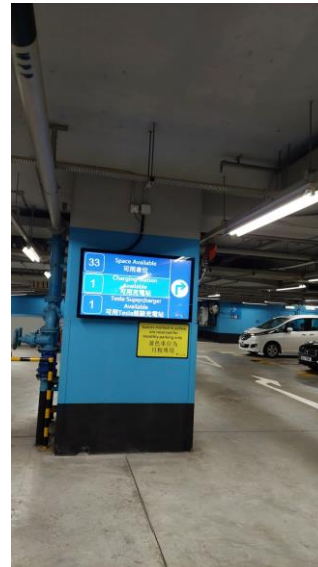
# EV Bay Management System



1. Park and Charge, no need to install Payment kiosk
2. Freely configurable tariff (charging time or power consumption)
3. Monitor EV bay occupancy
4. Charge is possible, while using or not using the charger.
5. Fully integrated with car park control system, online payment or pay at exit with Octopus/Credit card



# Smart Signage



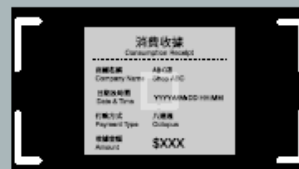
- Dynamic content
- Customizable layout design
- Real-time and interactive data from Internet (e.g. traffic condition and weather information)
- Special available bay information (e.g. EV, monthly, disabled and etc.)



# Automatic Redemption Solutions



1. 請將收據放置於螢幕下方的指定空格中。  
Please place the receipt in the designated space below the screen.



拍照  
Take Photo

3. 在鏡頭成功對焦收據後，請按下螢幕上的拍照按鍵。  
Once the camera successfully focuses on the receipt, please press the capture button on the screen.



確定  
Confirm



2. 請確保收據的正面朝上，且未摺疊。  
Ensure that the front side of the receipt is facing up and is not folded.



4. 請等待收據照片處理。  
Please wait for the receipt photo to be processed.

5. 確認收據資料正確後，按“繼續”兌換免費泊車優惠。  
Once the receipt data is confirmed to be correct, press "Continue" to redeem the free parking hour(s) explanation.



An aerial night photograph of a large, multi-lane roundabout in a city. The roundabout is filled with cars and trucks, their headlights and taillights creating a flow of light. In the center of the roundabout is a large, circular fountain with multiple jets of water spraying upwards. The surrounding area includes modern buildings, some with lit-up facades, and parking lots. The overall scene is illuminated by streetlights and building lights, creating a vibrant urban atmosphere.

**we**  
**change**  
**the world of welcoming people**