



# SLOVENIAN AGRICULTURE, STATUS, TRENDS, CHALLENGES

Ljubljana, 14. October, 2019

**Simon Grmovšek** univ. dipl ing., direktor RWA Slovenija d.o.o.

**Agrosaat**

# Slovenia - Spotlight

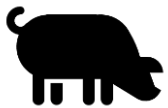
	Unit	Austria	Slovenia
Area	1.000 km <sup>2</sup>	84	20
Population	1.000	8.800	2.100
Population per km <sup>2</sup>	per km2	105	104
Gross domestic product per capita	1.000 Euro	44	22
Unemployment rate	in %	4,9	4,2
Agricultural area	1.000 ha	2.800	500
Area organic farming	in %	19,7	8,4

# SLOVENIAN AGRICULTURE STATUS

## Agriculture as an economic backbone:



800 Mio. €



600 Mio. €



1,4% GDP



# SLOVENIAN AGRICULTURE STATUS



7,2% to total employment



95% of farms are family farms

Average Farm



57 farmers age



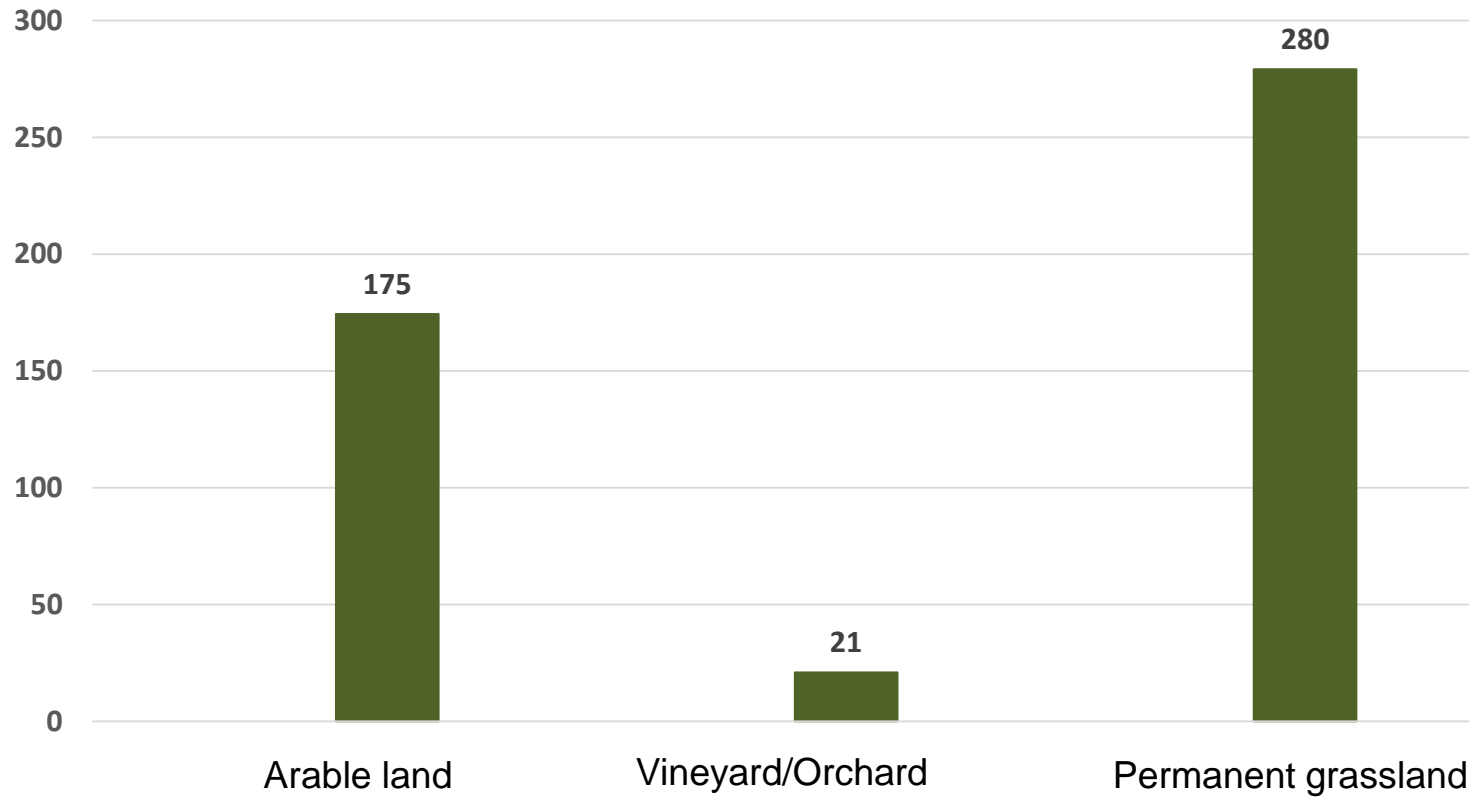
6,9 ha of cultivated farm land

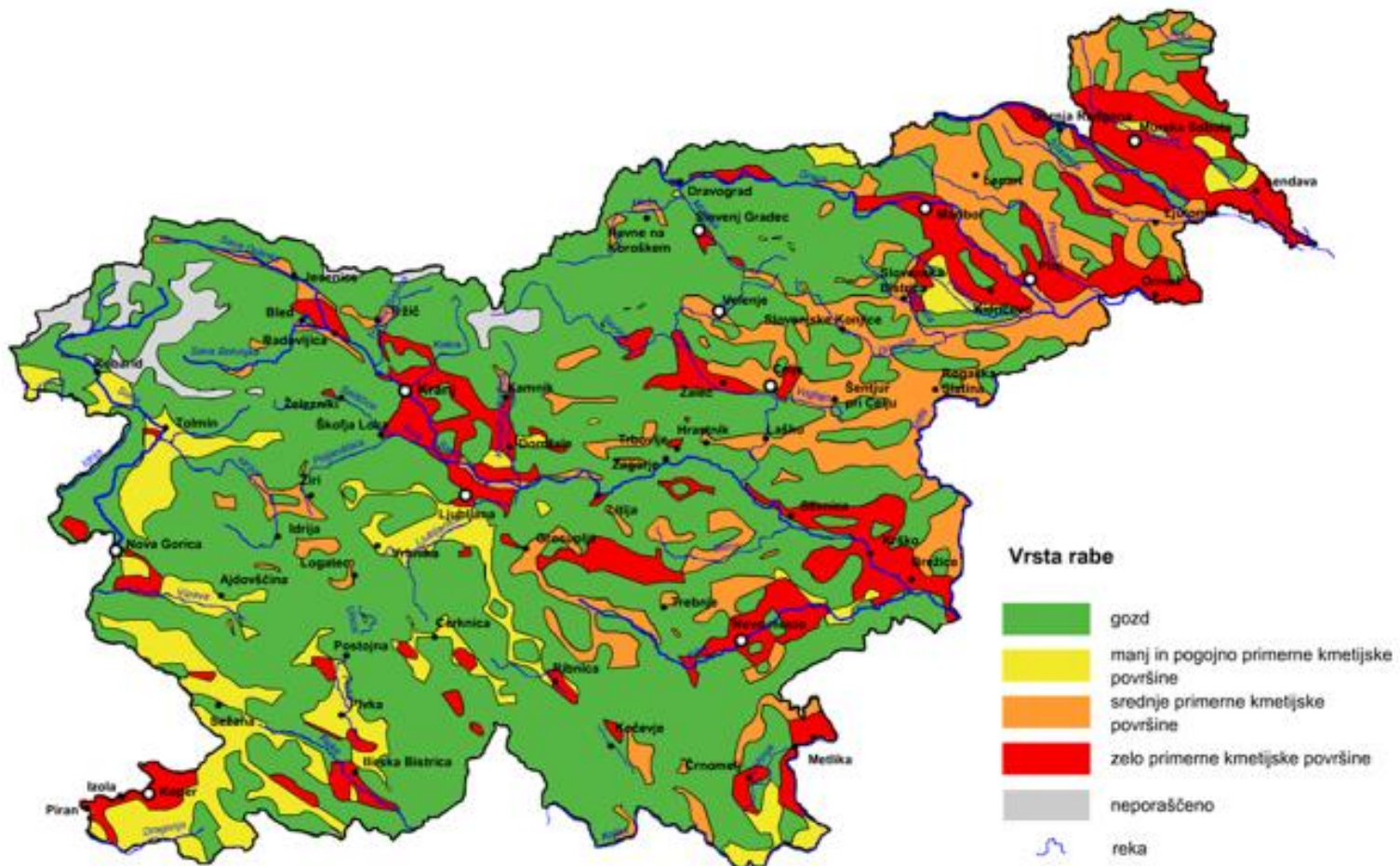


7,5 animals per farm

# Farm land distribution in Slovenija

in 1.000 ha



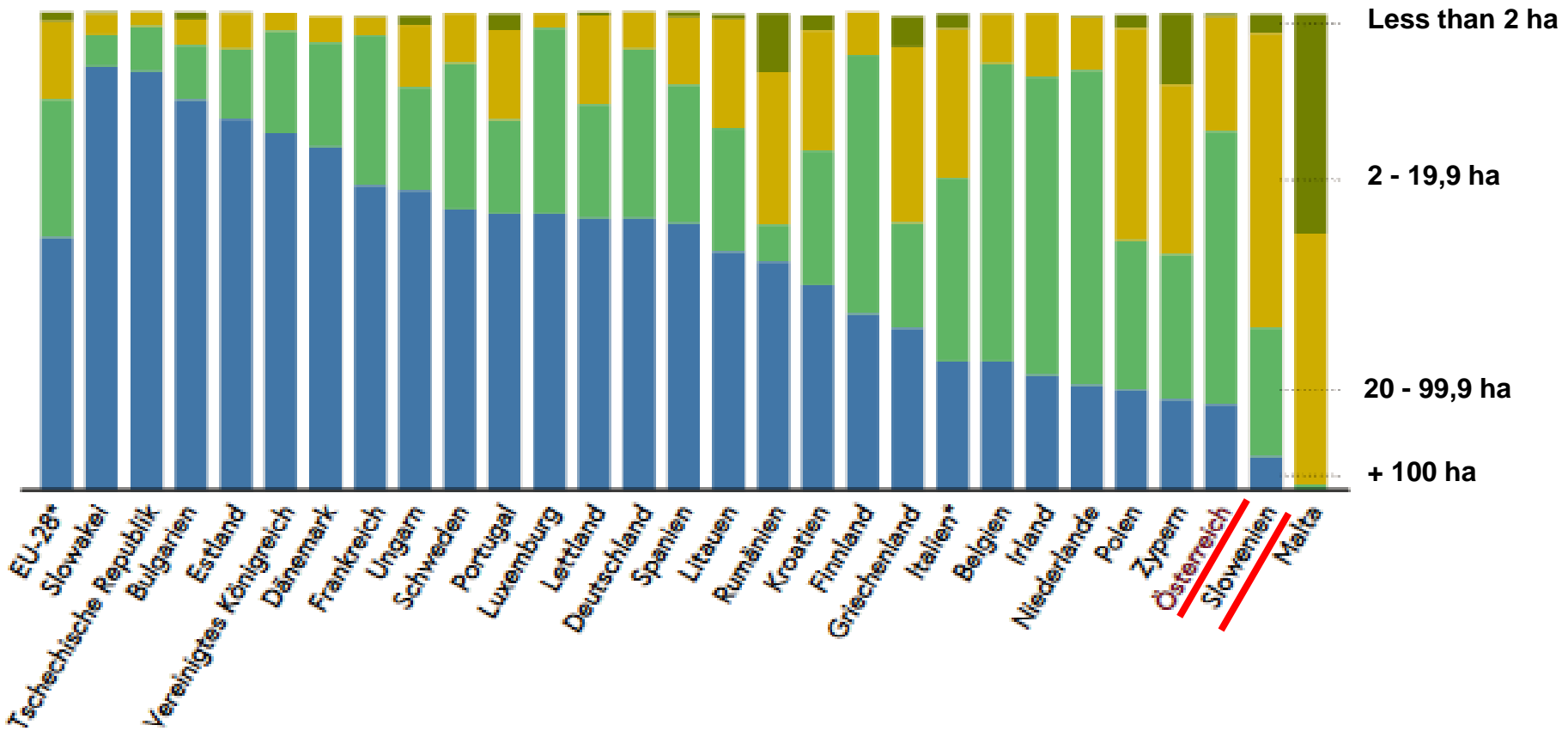


**Vrsta rabe**

- gozd
- manj in pogojno primerne kmetijske površine
- srednje primerne kmetijske površine
- zelo primerne kmetijske površine
- neporaščeno
- reka
- mesto
- mestna občina

# Slovenias agriculture within the EU-28

...it is very small structured



# Decreasing number of farmers...

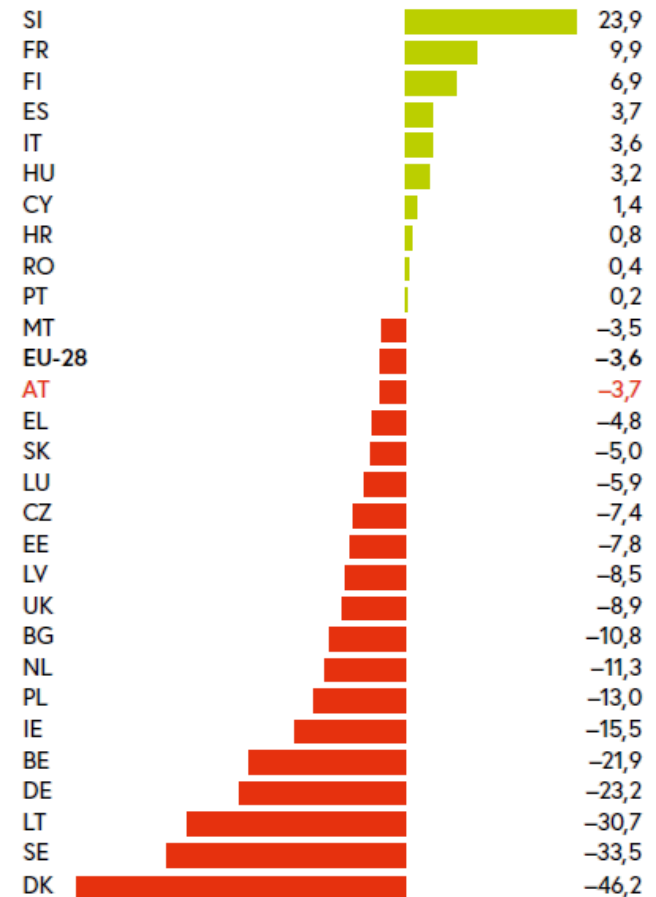
.. is caused by **high market pressure**

.. lead to **professionalisation**

- high education
- rational use of input material
- soil sampling, modern machinery

.. lead to improved **productivity** and earnings per working hour

**Increase of farmers income per working hour in % (2018)**



# Status Quo – Trade Balance

## AGRI-FOOD TRADE BETWEEN SLOVENIA AND AUSTRIA IN: mill. EUR:

EXPORT to AT	Average 2006-10	Average 2011-15	2016	2017	2018
	9,9	10,0	9,4	10,1	9,7
IMPORT from AT	Average 2006-10	Average 2011-15	2016	2017	2018
	19,0	16,7	13,7	13,9	13,5
BALANCE	<b>-9,1</b>	<b>-6,7</b>	<b>-4,3</b>	<b>-3,8</b>	<b>-3,8</b>

Source: SORS, calculated by AIS 2019



Export stable, import slowly decreasing.

# Status Quo - Self Sufficiency



**Overall increasing self sufficiency due to rise in productivity**

Recent development (2018):

- Higher rates in cereals, vegetables, fruit, eggs and honey
- The rates were lower in potatoes, meat and milk



**Self sufficiency rate above 100%**

- Milk
- Beef and chicken meat



**Self sufficiency rate below 100%**

- Cereals, potatoes, vegetables, pork meet

# Trends & Challenges



**New consumer expectations**

Rising environmental awareness

Landscape preservation



**Growing population**

Increasing food demand

Loss of farmland



**Rising digitalization**

Drones/ Precision farming

Prediction models/ Farmmanagement

# Agrosaat | RWA Slovenija



Nation wide partner of farmers via 5 locations

Leading seed company



Agrosaat is leading slovenian agriculture into the future, by providing necessary technology for tomorrows needs.